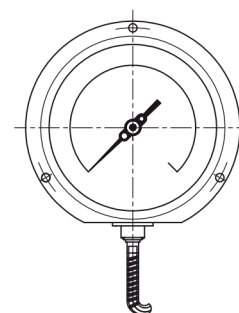
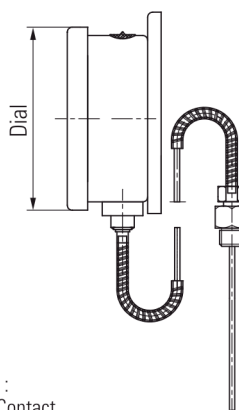
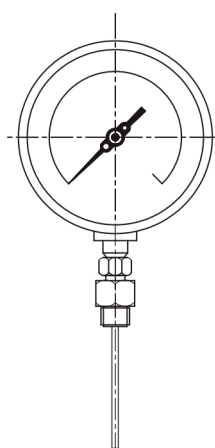
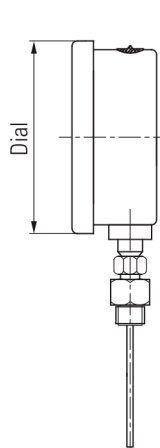




Temperature Gauge Type 1



Temperature Gauge Type 2



Optional :
With Electric Contact

APPLICATION

Suitable for corrosive, food & beverage, pharmaceutical, cryogenics, pumps, diesel engines & refrigerating plants, chemical & petrochemical industries, conventional & nuclear power plants, environments & gaseous or liquid media that will not obstruct the pressure system, hydro-cleaning machines, presses, engine compressors, turbines.

SPECIFICATION - TECHNICAL DATA

Dial Size (mm)	100	125	150	200	250	200
Stem Length (mm)	50 to 600					
Capillary Length (m)	1 / 3 / 7 / 10 / 15 / Other length are available on request					
Measuring Ranges*	-40 ... 60°C to 0 ... 650°C					
Accuracy (according to EN 13190)	Class 1					
Wetted Parts Material	Stainless steel (304) / Stainless steel (316) / Stainless steel (316L)					
Measuring Element	Inert gas filled expansion system					
Case Material	Stainless Steel (304) / Stainless steel (316)					
Process Connection	G 1/4 / G 3/8 / G 1/2 / 1/8 NPT / 1/4 NPT / 3/8 NPT / 1/2 NPT					
Protection Rating	IP 65 - IP 67					
Approval	ATEX II2GDc					
Additional Information	With damping fluid / Zero adjustment / Electrical contacts					

* Note : Other temperature units are available on request

*Specification given are subject to changed without further notice.