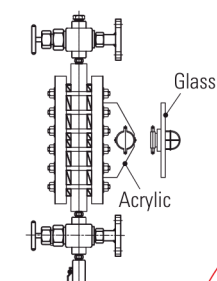
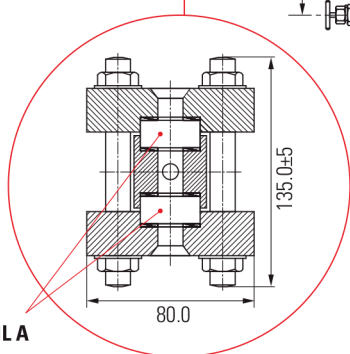


- 1 Main Chamber
- 2 Cover Plate
- 3 Transparent Glass
- 4 Bolt & Nuts
- 5 Isolation Valve
- 6 Process Connection
- 7 Vent Ball Valve
- 8 Drain Ball Valve

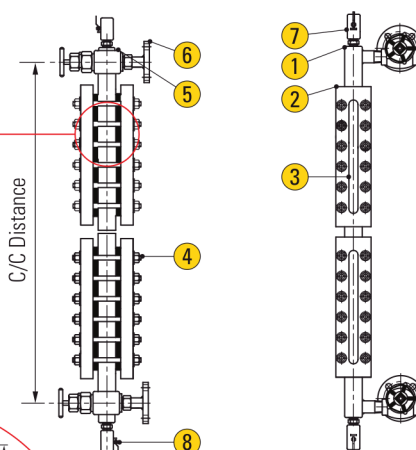


Option : Illuminator

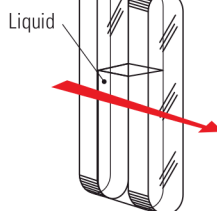
Refer to **DETAIL A**



Transparent Construction
(Sectional View)



Transparent Glass



DETAIL A

(Principle of Transparent Level Glass)



Option : Jacket Type

APPLICATION

Applicable for refinery, petrochemical, chemical, power, radioactive, fertilizer, food, pharma, metal industry applications.
(Refer to corrosion resistance table for valve materials selection).

SPECIFICATION - TECHNICAL DATA

Type of Gauge	(a) Low pressure - 30kg/cm ² , (b) Medium pressure - 100kg/cm ² , (c) High pressure - 200kg/cm ²
Mounting Orientation	Top - Bottom vertical, Side - Side right, Side - Side left, Side - Side back (Right/Left)
Temperature	Up to 400°C
CCD	Max. up to 3000mm
Liquid Chamber	In forged construction: Carbon steel, SS304, SS304L, SS316, SS316L, Monel, Titanium, Inconel 600, Hastelloy C, Poly Propylene, Other on request (Subject to pressure & Temperature Condition)
Cover Plate	In forged construction: Carbon steel, SS304, SS304L, SS316, SS316L, Monel, Titanium, Inconel 600, Hastelloy C, Poly Propylene
Cushion	CAF, PTFE, Grafoil with SS prignated
Gasket	CAF, PTFE, Grafoil with SS prignated
Fastner	SS, ASTM A 193 Gr B7 / A194 Gr 2H / Anodized Aluminium (for PP moc)
Scale	Aluminium anticorossion powder coated and SS engraved in mm
Glass	Applicable till 320°C as per DIN 708 / 7081, BS 3463, JS B 8211, Toughened, Borosilicate glass
Process Connection	Screwed / Flanged / Socket weld and other on request
Isolation Valve	Auto ball check valve (a) Screwed bonnet offset construction suitable upto 50 kg/cm ² (b) Bolted bonnet offset construction suitable above 50 kg/cm ² (c) Material construction as per wetted part
Vent	1/2" Plugged / 1/2" Needle valve / 1/2" Ball valve / 1/2" Globe Valve / 1/2" Gate Valve, other on request
Drain	1/2" Plugged / 1/2" Needle valve / 1/2" Ball valve / 1/2" Globe Valve / 1/2" Gate Valve, other on request
Optional	(a) Protection shield for temperature up to 550°C - Mica shield (b) Illuminator - Weather proof IP 67 (c) Illuminator - Flame proof Gr.IIA/IIB (d) Illuminator - Flame proof Gr.IIC (e) Non-frost extension for extreme low temperature application (f) Heating jacket - to read the level of high congelable or ebullient liquid (g) IBR certification

SPECIFICATION - ILLUMINATOR

Rating	Up to 15W / 25W GLS lamp or 15W LED lamp With or without flashing 240 VAC	CCE Certificate	A / P / HQ / MH / 104 / 1817
Construction	In cast alloy LM6	Earthing	2 Nos. External & 1 No. Internal
Gas Group	IIA, IIB, IIC as per IS 2148 / 2004	Paint	Epoxy powder coated light grey shade 631 of IS:5
Deg of Protection	Ip66 as per IS : 12063 / 1987	Cable Entry	2 Nos. 3/4" ET with cable glands
		Mounting	Transparent acrylic sheet with mounting bracket

*Specification given are subject to changed without further notice.