

LEVEL - REFLEX LEVEL GAUGE

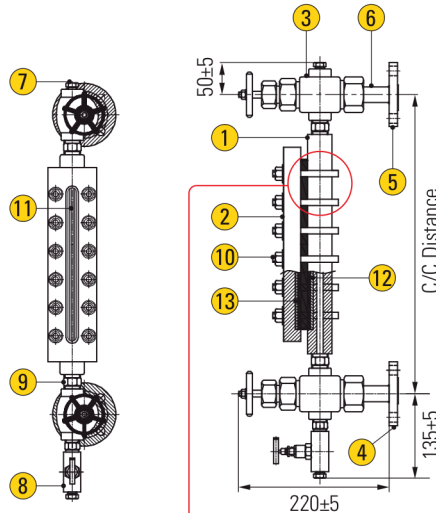


VARIMEX valves®
CO. LTD.

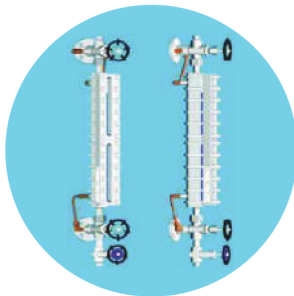
HELS
HOSE-EXPANSION JOINT-LEVEL CONTROL-STEAM TRAP

AYVAZ

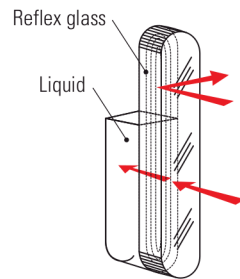
Tel: 03-5569 2933 (6 Lines) Fax: 03-5569 2588, 5569 2788
Email: mercoid@mercoid.com.my, valmicro@valmicro.com.my
http://www.mercoid.com.my



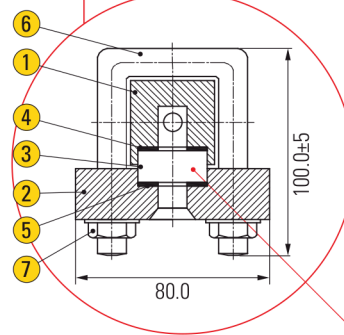
- 1 Liquid Chamber
- 2 Cover Plate
- 3 Isolation Valve
- 4 Inlet Process Flange
- 5 Outlet Process Flange
- 6 Tail Piece
- 7 Vent Plug
- 8 Drain Valve
- 9 Nipple
- 10 Fastener
- 11 Reflex Glass
- 12 Gasket
- 13 Cushion



Option : Jacket Type



DETAIL A
(Principle of Reflex Level Glass)



- 1 Liquid Chamber
- 2 Cover Plate
- 3 Reflex Glass
- 4 Gasket
- 5 Cushion
- 6 "u" Bolt
- 7 Nuts & Washer

Refer to **DETAIL A**

Reflex Construction
(Sectional View)

APPLICATION

Applicable for refinery, petrochemical, chemical, power, radioactive, fertilizer, food, pharma, metal industry applications.
(Refer to corrosion resistance table for valve materials selection).

SPECIFICATION - TECHNICAL DATA

Type of Gauge	(a) Low pressure - 30kg/cm (b) Medium pressure - 100kg/cm ² (c) High pressure - 200kg/cm ²
Mounting Orientation	Top - Bottom vertical Side - Side right Side - Side left Side - Side back (Right/Left)
Temperature	Up to 400°C
CCD	Max. up to 3000mm
Liquid Chamber	In forged construction: Carbon steel, SS304, SS304L, SS316, SS316L, Monel, Titanium, Inconel 600, Hastelloy C, Poly Propylene, other on request (Subject to pressure & Temperature condition)
Cover Plate	In forged construction: Carbon steel, SS304, SS304L, SS316, SS316L, Monel, Titanium, Inconel 600, Hastelloy C, Poly Propylene
Cushion	CAF, PTFE, Grafoil with SS prignated
Gasket	CAF, PTFE, Grafoil with SS prignated
Fastner	SS, ASTM A 193 Gr B7 / A194 Gr 2H / Anodized Aluminium (for PP moc)
Scale	Aluminium anticorossion powder coated and SS engraved in mm
Glass	Applicable till 320°C as per DIN 708 / 7081, BS 3463, JS B 8211, Toughened, Borosilicate glass
Process Connection	Screwed / Flanged / Socket weld and other on request
Isolation Valve	Auto ball check valve (a) Screwed bonnet offset construction suitable upto 50 kg/cm ² (b) Bolted bonnet offset construction suitable above 50 kg/cm ² (c) Material construction as per wetted part
Vent	1/2" Plugged / 1/2" Needle valve / 1/2" Ball valve / 1/2" Globe Valve / 1/2" Gate Valve
Drain	1/2" Plugged / 1/2" Needle valve / 1/2" Ball valve / 1/2" Globe Valve / 1/2" Gate Valve
Optional	(a) Non-frost extension for extreme low temperature application (b) Heating jacket - to read the level of high congelable or ebullient liquid (c) IBR certification

*Specification given are subject to changed without further notice.